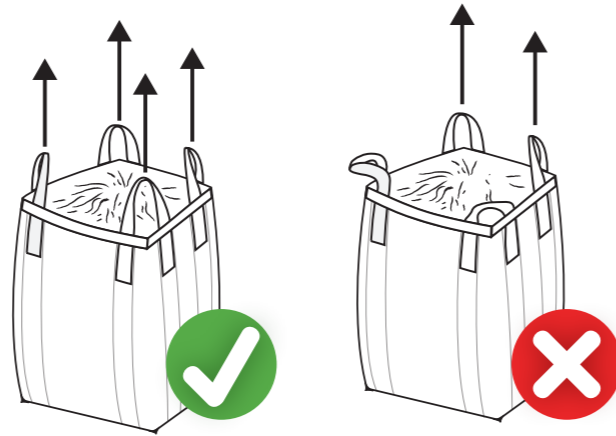


# Safe Handling of FIBCs

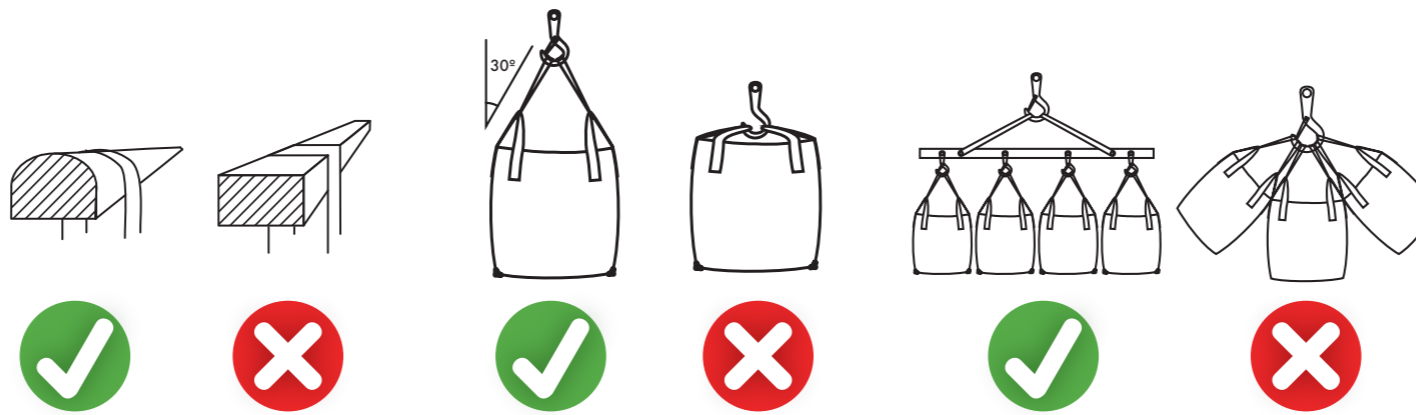
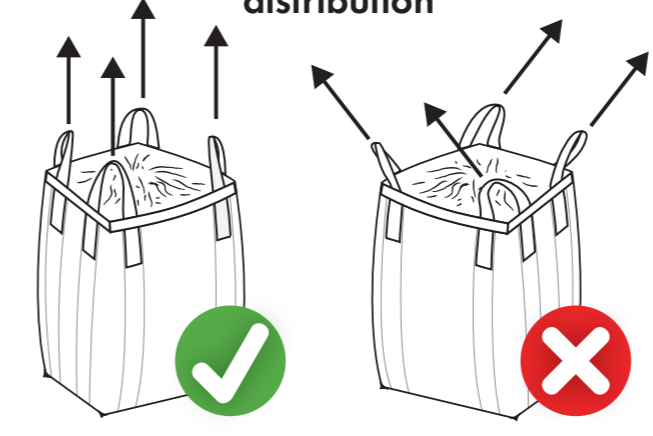
## ✓ DO

- ✓ Inspect FIBCs before handling
- ✓ Read the instruction label on the FIBC
- ✓ Check that the discharge arrangements are properly secure before filling
- ✓ Ensure that the filled FIBC is stable
- ✓ Close the top inlet correctly
- ✓ Use suitable lifting gear of sufficient capacity to take the suspended load
- ✓ Adjust lift gear width to match width of the FIBC being handled
- ✓ Check lift gear, hooks, tines etc. are of adequate size, well rounded and free of sharp edges
- ✓ Take appropriate measures for dust control
- ✓ Consider the possibility of static electricity hazards
- ✓ Protect FIBCs from rain and/or prolonged sunlight
- ✓ Ensure that FIBCs are adequately secured in transportation
- ✓ Take care to ensure stability when stacking
- ✓ Refer to Australian Standard AS3668 for more comprehensive information on FIBCs

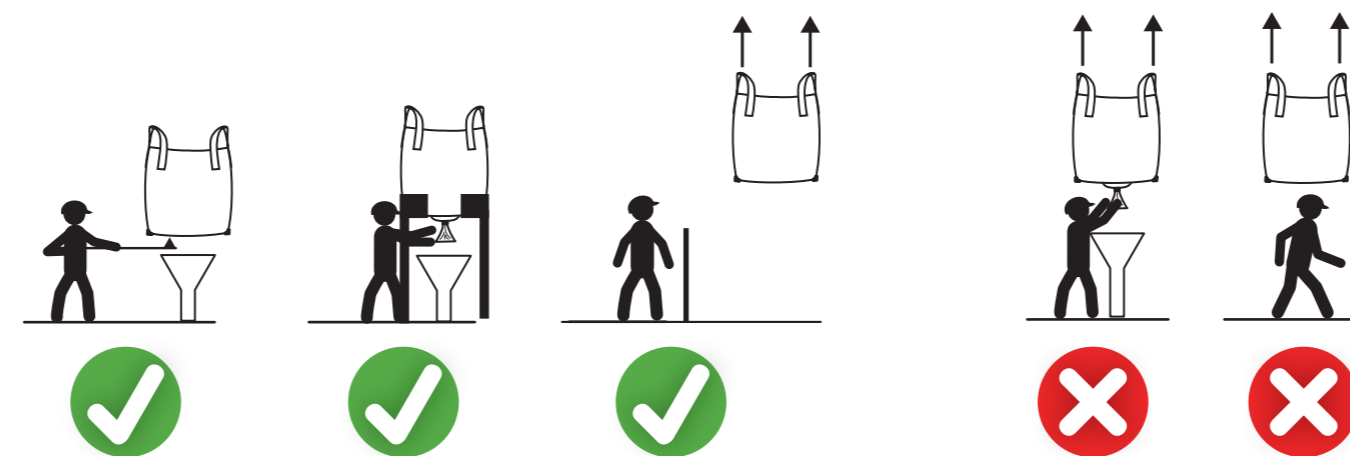
### Lift FIBCs using all loops correctly



### Lift FIBCs vertically with even weight distribution



### Fill FIBCs safely and do not stand underneath a suspended bag



### Do not stack FIBCs unless sure of their stability



### Protect from Sun & Rain



## ✗ DON'T

- ✗ Exceed the SWL/WLL under any circumstances
- ✗ Fill FIBCs unevenly
- ✗ Stop or start suddenly during transportation
- ✗ Subject FIBCs to snatch lifts or jerk stops
- ✗ Drag FIBCs
- ✗ Allow personnel under a suspended FIBC
- ✗ Allow a FIBC to project over the side of vehicle or pallet
- ✗ Use sharp or jagged lifting equipment
- ✗ Withdraw lift equipment before relieving all the load on the lifting device
- ✗ Stack FIBCs unless sure of their stability in a stack
- ✗ Use FIBCs in new conditions without consulting the supplier
- ✗ Refill single trip FIBCs
- ✗ Use damaged FIBCs